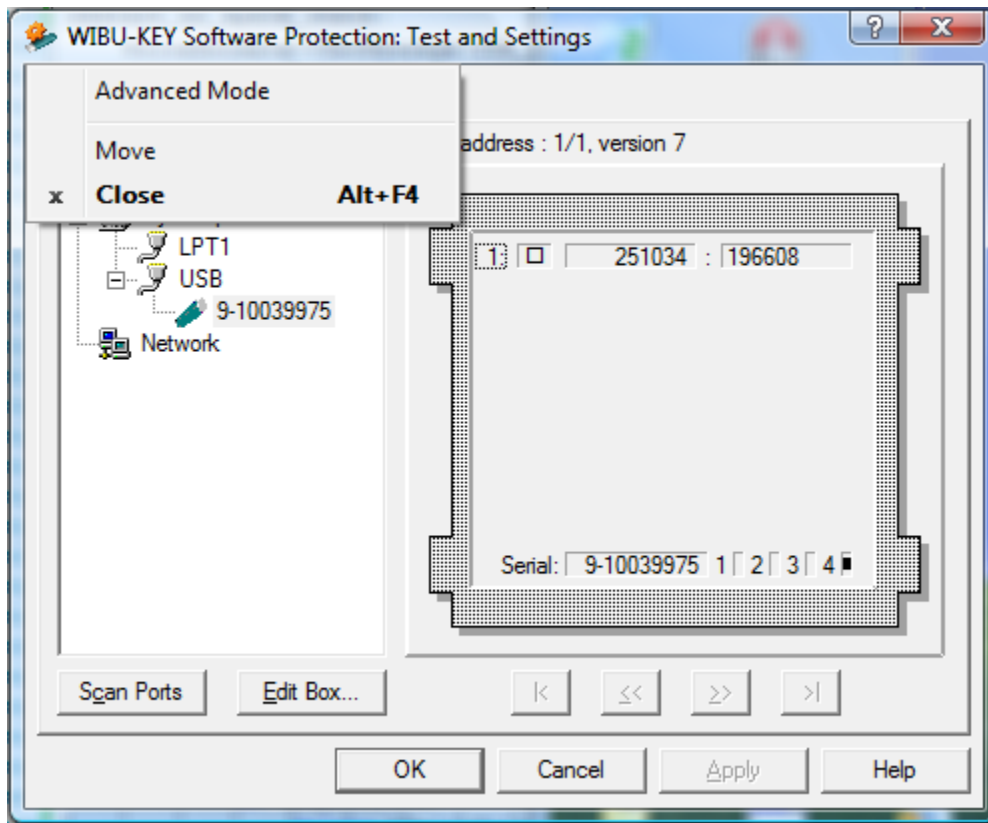
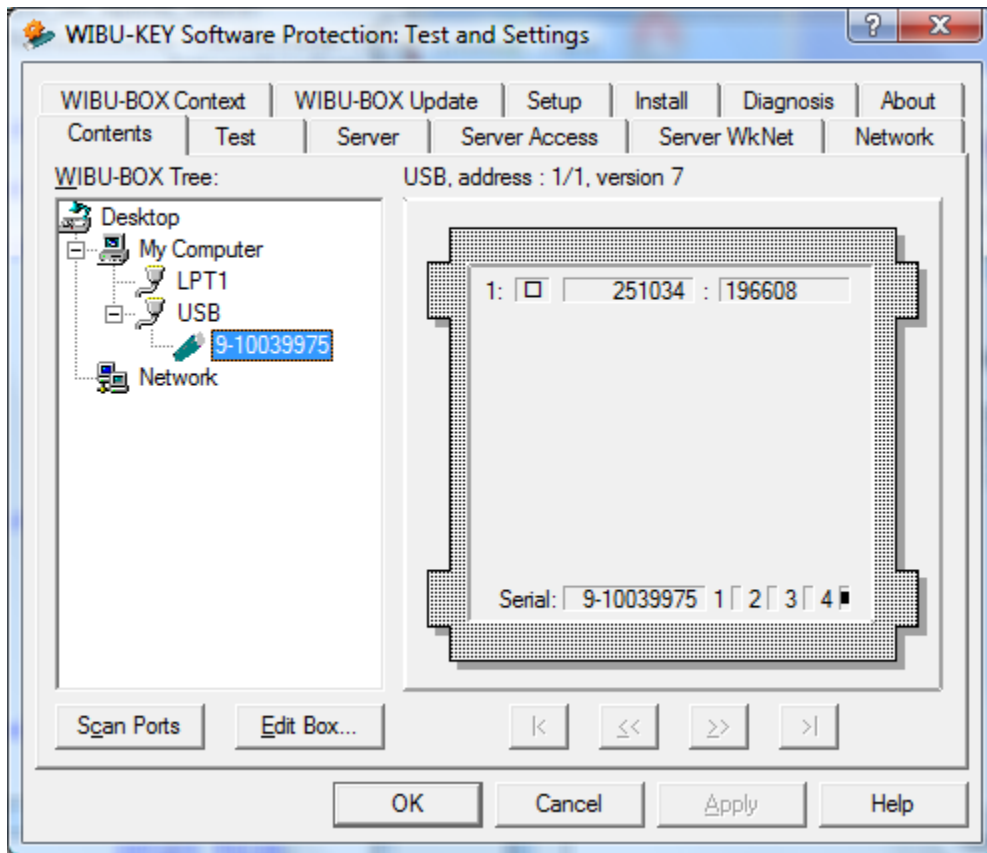


## Dongle Update Instructions

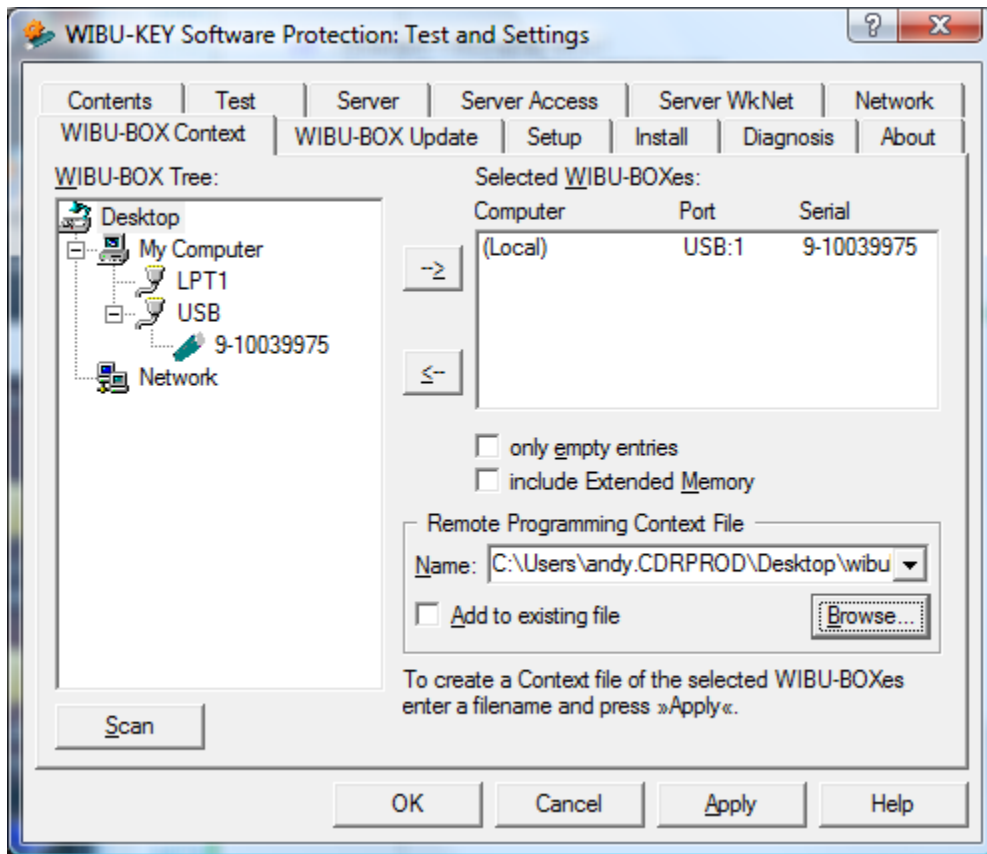
- 1) Go to Windows Control Panel and double click "WIBU-KEY" to bring up the Wibu utility.
- 2) Next, click the small icon to the far left on the title bar and select "Advanced Mode":



3) The dialog should now change to look similar to this:



- 4) Now click the “WIBU\_BOX Context” tab and then click the “Browse” button under “Remote Programming Context File” and then select a location to save the file and then click “Save”. You should now see similar to this:



- 5) Finally, just click the “Apply” button which will result in the file being saved at the location specified.

- 6) Attach the file to an email and send to [sales@infinadyne.com](mailto:sales@infinadyne.com).

Infinadyne will produce a file from this information and email it back to you. Simply make sure that the dongle is plugged into a USB connector and double-click the file. This must be done on the computer where CD/DVD Inspector is installed.

Notes:

- In order for these instructions to work Inspector 3.0 must currently be installed so that the USB dongle tools that will be used are available.
- The dongle must be plugged into a USB port on the computer.